



# Planning for the Future

## Committee Meeting #4

November 2, 2022

# Meeting Goals

---

## **5:30 to 6:00 | PART 1: Setting the Scene**

- Process Information
- Re-Cap of Past Meetings
- Pause and Listen
- Activity 1 – Thought Exchange
- Q/A Discussion

## **6:00 to 7:15 | PART 2: Task at Hand**

- Facility Assessment Overview
- Q/A Discussion
- Activity 2 – Draft Facility Belief Statements
- Changing School Utilization Video
- Activity 3 – Do's and Do Not's

## **7:15 to 7:30 | PART 3: Next Steps**

- Public Survey
- Process Update

# RSP Information

## RSP Team:

**Robert Schwarz, AICP, CEFP,**

Military, County, City, and School District Planner  
University of Kansas – Master of Urban Planning (MUP)

**Ginna Wallace, Planner**

University of Kansas – Master of Urban Planning (MUP)

## SIMPLE FACTS ABOUT RSP



- Founded in 2003
- Professional educational planning firm
- Expertise in multiple disciplines (GIS, Planning, Facilitation)
- 20+ years of planning experience, 80+ years of education experience, 20+ years of GIS experience
- Projection accuracy of 97% or greater

Company was started with the desire and commitment to assist school districts in long-range planning. RSP has served over **130** clients in:

- |             |                |
|-------------|----------------|
| • Arkansas  | • Nebraska     |
| • Colorado  | • North Dakota |
| • Iowa      | • Oklahoma     |
| • Illinois  | • South Dakota |
| • Kansas    | • Tennessee    |
| • Minnesota | • Wisconsin    |
| • Missouri  |                |

## RSP Facility Master Plan Projects:

Cedar Rapids Community Schools  
Clear Creek Amana Community Schools  
Hutchinson Public Schools

## RSP Collaboration with USD 497:

Enrollment Analysis: 2011/12 through 2019/20

## Our Partners:



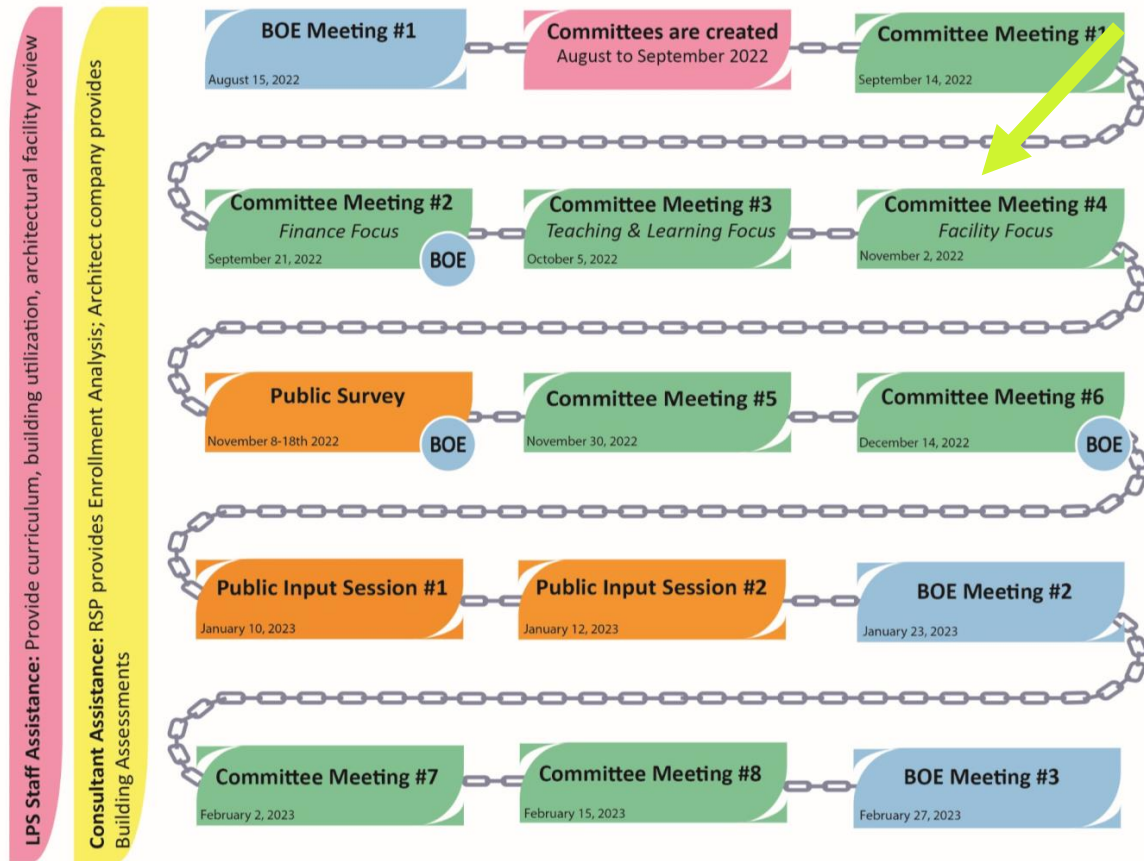
# FMP Process Details

## 3 Board of Education Meetings

## 8 Committee Meetings

- September 14<sup>th</sup>
- September 21<sup>st</sup>
- October 5<sup>th</sup>
- **November 2<sup>nd</sup>**
- **November 30<sup>th</sup>**
- December 14<sup>th</sup>
- February 2<sup>nd</sup>
- February 15<sup>th</sup>

## 3 Public Input Opportunities



Updated 10/09/22

Begins: **August 2022**

Completed: **February 2023**

# Reasons for Study

---

## Challenges to Overcome:



**Budget**



**Demographic  
Shifts**



**Enrollment  
Decrease**



**Building Utilization  
Inefficiency**

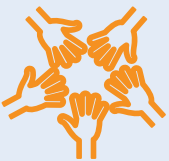
## Avenues to Achieve Success:



1. Data Driven Analysis and Outcome



2. Examine solutions that will continue to improve the student academic experience

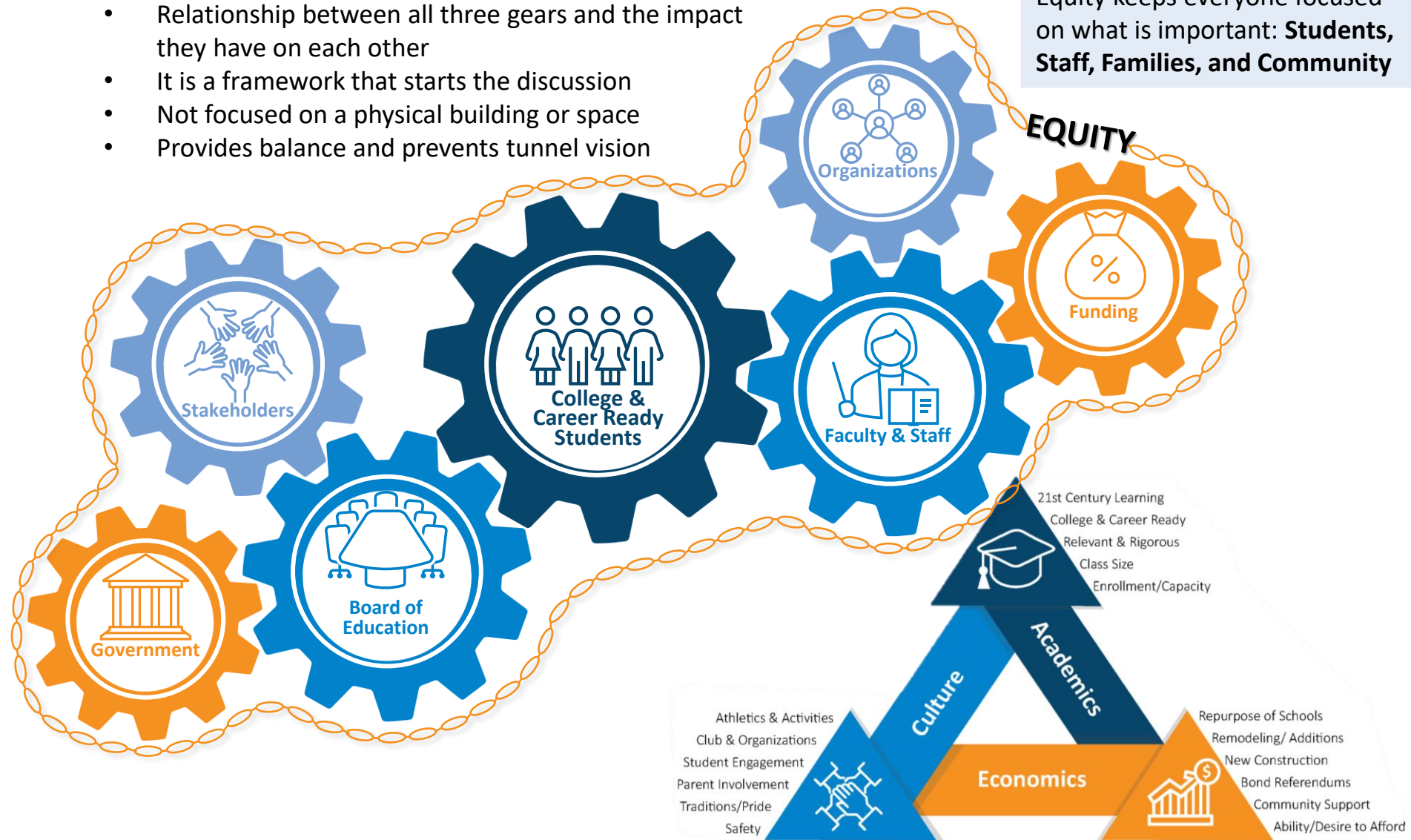


3. Create a Committee that can explore all solutions

# A Process with the Lens of Success

- Equity is wrapped around this entire process
- Relationship between all three gears and the impact they have on each other
- It is a framework that starts the discussion
- Not focused on a physical building or space
- Provides balance and prevents tunnel vision

Equity keeps everyone focused on what is important: **Students, Staff, Families, and Community**



# Ground Rules

---



## FACILITATOR WILL LEAD

Facilitator will lead meeting and provide opportunities for discussion

## STAY OPEN MINDED



## BE AN ACTIVE LISTENER

Provide complete thoughts, have no personal agenda

## BE TIMELY

Make your points concisely,  
allow others a chance



## COME PREPARED

Come prepared for the discussion

## REMAIN THOUGHTFUL AND RESPECTFUL



## REMAIN ENGAGED

Actively participate during  
the meeting

## USE PARKING LOT

Place to save questions  
for future discussion



# FMP Goals

---

## How can we help Lawrence Public Schools achieve...



### Financial Responsibility

- Save dollars where possible
- Prioritize future budget spending



### Neighborhood Schools

- North/South divide
- Attend closest school
- Transportation



### Ideal School Size

- 2 sections
- 3 sections
- 4 sections



### Student Success Measures

- Special Programming
- Potential for Daycare



### Boundary Realignment

- Utilization drives changes
- Geographic Divide



### Preferred Building Utilization

- Instructional/Structural
- Capacity under 95%
- Capacity over 80%



# Meeting #1 Recap

---

## The Futures Planning Committee met for the 1<sup>st</sup> time on September 14<sup>th</sup>, 2022:

- ✓ Introduction to *Facility Master Plan*
  - RSP and District Staff Introduction
  - Committee Introductions
  - Discuss Ground Rules of Meetings and Process
- ✓ Set the Scene
  - Lens of Success
  - Academics, Culture, and Economics (ACE)
  - Equity Presentation
- ✓ Reason for Process
  - Discuss scope of work, LPS Mission Statements, and *drafted* “Goals and Objectives”
  - Activity: Answer discussion questions
- ✓ Next Steps

## Meeting #2 Homework

1. Futures of Learning Video: [https://www.youtube.com/watch?v=xoSJ3\\_dZcm8](https://www.youtube.com/watch?v=xoSJ3_dZcm8)
2. BOE Meeting September 12, 2022, Video: <https://www.youtube.com/watch?v=MydJi57u4l4>
3. District Finance Video: <https://www.youtube.com/watch?v=JVhq860e2qs>
4. Responses from Committee Meeting 1: See handouts

# Meeting #2 Recap

**The Futures Planning Committee met for the 2<sup>nd</sup> time on September 21<sup>st</sup>, 2022:**

✓ Introduction and Recap

- Discuss Ground Rules of Meetings and Process
- Discussion of Homework Materials

✓ Task at Hand

- Lawrence Finance Review
- Finance Priorities Discussion

*1: Achieve Competitive Wages for Staff – 100% committee support*

*2: Allocate Funds for Annual Cost Increase – 94% committee support*

*3: Increase District Cash Balances – 55% committee support*

- Draft/Brainstorm Finance Belief Statements

✓ Next Steps

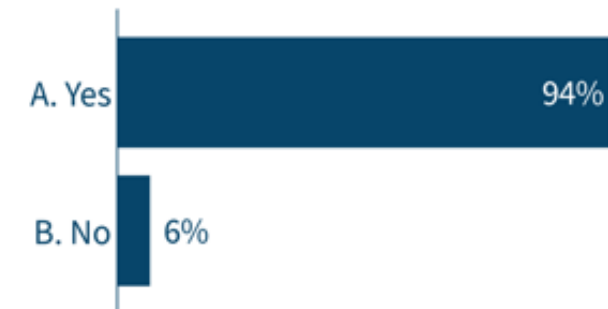
## Meeting #3 Homework

1. District Finance Presentation
2. DRAFT Finance Belief Statements  
Prepare one finalized Belief Statements for Meeting #3
3. Review Strategic Plan and Meeting #2 RSP presentation

### I support Finance Priority 1: Achieve Competitive Wages for Staff



### I support Finance Priority 2: Allocate Funds for Annual Cost Increases



### I support Finance Priority 3: Increase District Cash Balances



# Meeting #3 Recap

**The Futures Planning Committee met for the 3<sup>rd</sup> time on October 5<sup>th</sup>, 2022**

- ✓ Introduction and Recap
  - Discuss Ground Rules of Meetings and Process
  - Discussion of Homework Materials
  - Finalize/Vote on Finance Belief Statements
- ✓ Task at Hand
  - Lawrence Teaching & Learning Review
  - Teaching & Learning Goal Summary Priorities Discussion

*1: Cohesive Curriculum*

*2: Student-Centered Learning*

*3: Safe and Supportive Schools*

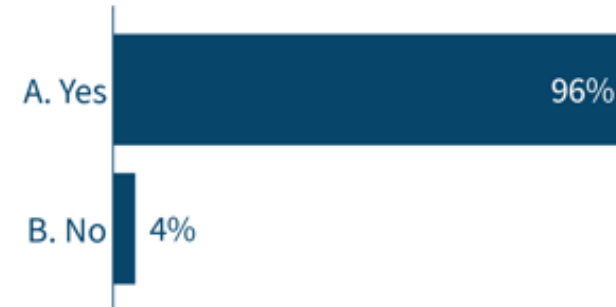
- ✓ Discuss Teaching & Learning Statements

- ✓ Next Steps

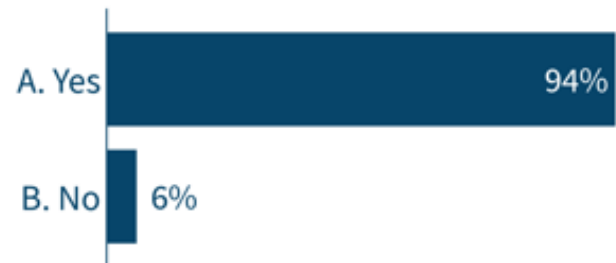
## Meeting #4 Homework

1. LPS BOLD Panel Presentation
2. Summary Tables Draft
3. FPC Meeting #4 Agenda
4. Parking Lot Questions 1 to 3

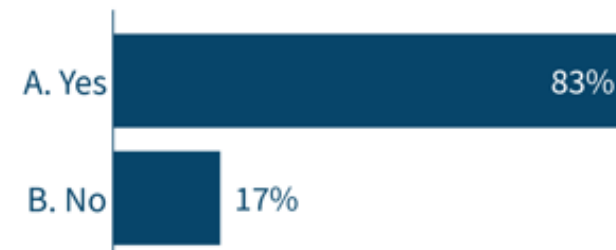
### I support Teaching & Learning Statement 1: Cohesive Curriculum



### I support Teaching & Learning Statement 2: Student-Centered Learning



### I support Teaching & Learning Statement 3: Safe and Supportive Schools



# Pause and Listen

---

A brief presentation to address:

- ✓ History
- ✓ 2021/22 Budget Reeducation
- ✓ Future Cost Savings
- ✓ Other use of school space
- ✓ Futures Planning Committee Objectives

## Progress Update

- ✓ Financial Update
- ✓ Strategic Plan/Teaching and Learning
- ✓ Facility Condition Assessment
- ✓ Belief Statements/SMART Goals (Finance, Teaching & Learning, Facilities)
- ☐ Future Enrollment Projections
  - Future Homework for Meeting #5
- ☐ Solution Conversation(s)

Orange: Complete in previous meeting(s)

Blue: Complete tonight

# A Brief History

---

- Board approved \$5 Million in budget cuts for 2009-2010 and 2010-2011.
- Elementary School Facility Vision Task Force recommendation:
  - Close Wakarusa Valley Elementary School.
  - Create another group to study consolidation of 6 central and east Lawrence schools into 3 or 4.
- Central and East Lawrence Elementary School Consolidation Work Group split and made 2 recommendations:
  - The board should decide how to consolidate schools, OR
  - The board should keep all schools open and pursue a bond issue for maintenance and improvements.
- Board closed Wakarusa Valley, kept remaining schools open, & pursued a \$92.5 million bond issue in 2013 to improve all schools.
- Board decided to use contingency reserve funds for operational costs. These are one-time funds; once depleted, they are no longer available.

# Budget Reductions

---

- April 11: Board approves \$6.4 million in budget reductions in staffing/programs.
- Bridges a \$4.27 million general fund shortfall.
- Frees funds for reallocation to board priorities, including staff salaries and replenishing contingency reserves.

# Key Budget Savings

---

## Restructuring

- EL, MS, HS, LVS Staffing - \$4.6 million
- Administration - \$577,441
- Library Media Services - \$264,320
- Special Education - \$172,862
- Learning Coach Program - \$163,521
- AVID Program - \$100,000
- MS/HS Athletics Staffing - \$42,866

## Reductions

- Building Budgets - \$204,630
- Professional Development - \$150,000
- Operations, Supplies, Services - \$129,021



Lawrence Public Schools  
**EARLY CHILDHOOD**





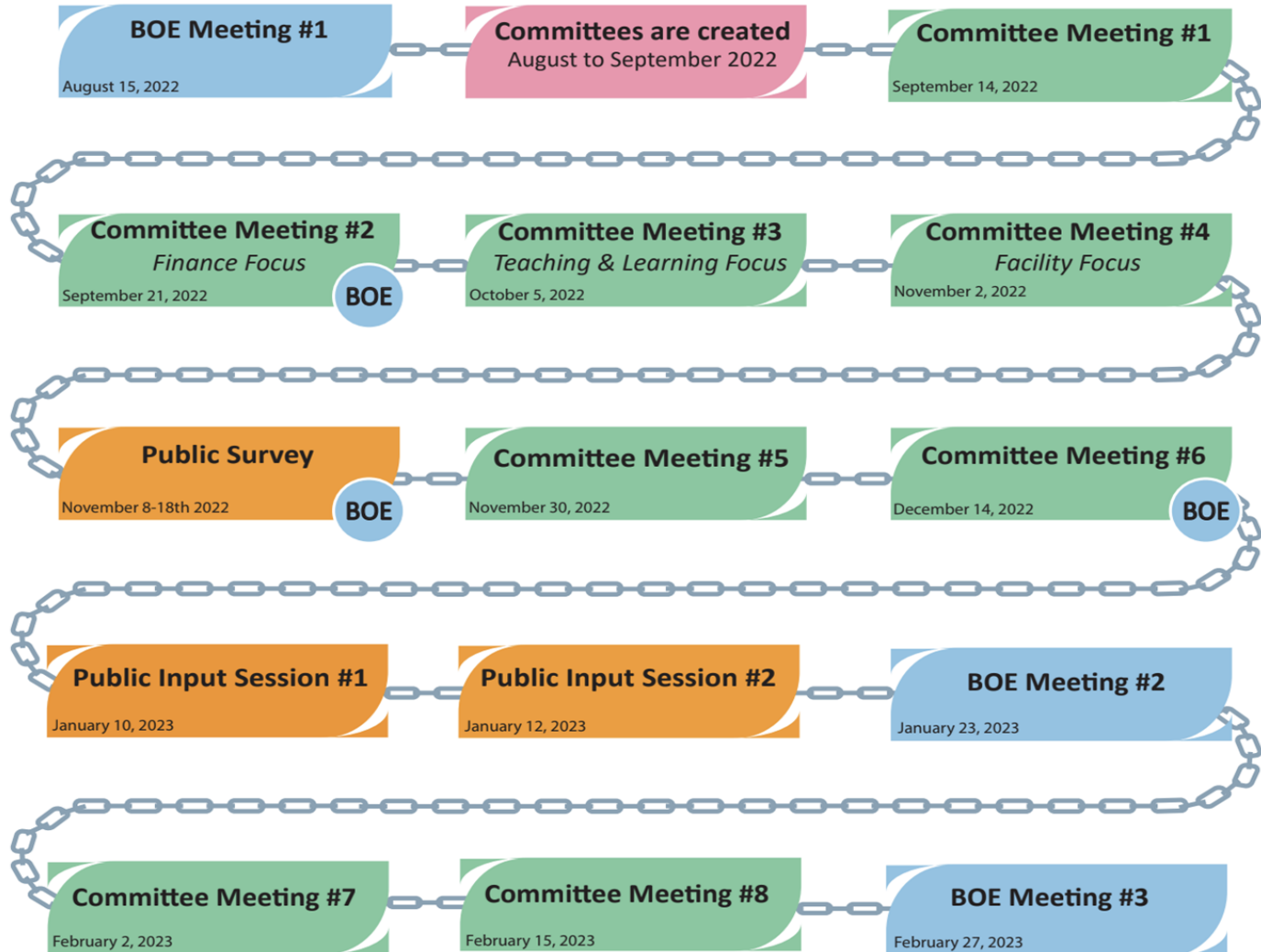


*Exciting to see this first-in-the state program  
create these opportunities for more  
Lawrence children!*

## Futures Planning Committee - Board of Education Approval

**LPS Staff Assistance:** Provide curriculum, building utilization, architectural facility review

**Consultant Assistance:** RSP provides Enrollment Analysis; Architect company provides Building Assessments



# Futures Planning Committee Objectives

---

- **Achieve Competitive Wages for Staff to recruit and retain high-quality staff to meet the needs of students.**
- **Allocate Funds for Annual Cost Increases in order to maintain a balanced budget.**
- **Increase District Cash Balances to replenish contingency funds for emergency needs.**

# Thought Exchange thoughtexchange



tejoin.com

150-617-775

In order to continue to make progress towards our objectives within the Futures Planning Committee, what are our most important next steps toward solutions?

A separate PDF has all the thought exchange thoughts provided by the committee

# Part 2:

## *Task at Hand*

- ☐ Lawrence Facility Condition Review – presentation from Architect and Dr. Larry Englebrick
- ☐ Activity 2 – *Discuss & Write Facility Belief Statements*
- ☐ Discussion on Changing School Utilization
- ☐ Activity 3 – *Do's and Do Not's*



# Facilities and Operations

# Facility and Operation Items

## *Long Range Planning:*

- Available Funding
- Facility Needs
- Balancing of Available Funding and Facility Needs

## *Facility Survey Areas:*

- Architectural Survey
- Building Exteriors Survey
- Concrete / Asphalt Survey
- Electrical Service Survey
- HVAC Survey
- Roofs Survey

## 5 Year Plan

- Year 1 Improvement Plan Developed and Ready to Bid by February
- Year 2 Improvement Plan Identified to the 90% Level
- Year 3 Improvement Plan Basic Outline Identified
- Year 4 General Scope of Work Identified
- Year 5 General Scope of Work Identified





# Survey Example: Roofs

## PHOTOGRAPHIC DOCUMENTATION



40. OVERVIEW OF SPLITS IN EDGE FLASHING



41. OPEN VOID IN DRAIN FLASHING



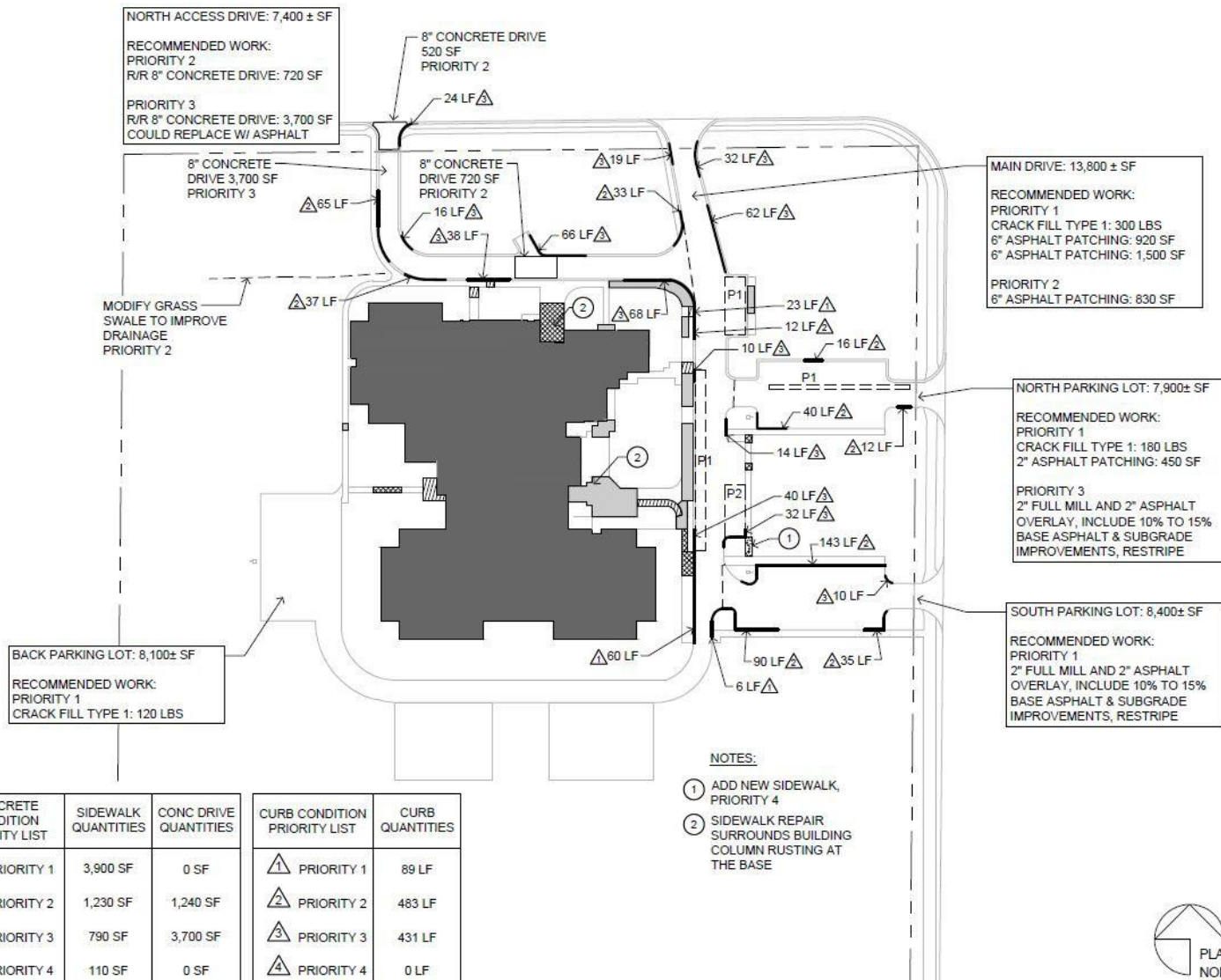
42. OPEN VOID IN CURB FLASHING SEAM



43. OVERVIEW OF DAMAGED CURB FLASHING



# Survey Example: Asphalt and/or Concrete



# Survey Example: Asphalt and/or Concrete

LAWRENCE PUBLIC SCHOOLS - PARKING LOT, CURB, AND SIDEWALK SURVEY  
ESTIMATE OF PROBABLE IMPROVEMENT COSTS

2/25/2022 N&S Job #2021-2932  
Prepared by Norton & Schmidt Consulting Engineers

Prairie Park Elementary

Survey	Description	Units	Quantity	Unit Cost	Totals	Priority 1	Priority 2	Priority 3	Priority 4
2022	North Parking Lot								
	Parking lot crack filling	Lbs	180	*	\$400.00	\$400.00			
	2" asphalt patching	Sq.Ft.	450	*	\$2,300.00		\$2,300.00		
	2" full mill and 2" asphalt overlay	Sq.Ft.	7,900	\$2.40	\$19,000.00			\$19,000.00	
	4" base asphalt improvements	Sq.Ft.	1,200	\$3.00	\$3,600.00			\$3,600.00	
	4" AB3 subbase improvements	Sq.Ft.	1,200	\$2.25	\$2,700.00			\$2,700.00	
	Restripe lot	TFAW			\$600.00			\$600.00	
	R/R 6" curb w/ gutter	Ln.Ft.	68	\$65.00	\$4,500.00		\$4,500.00		
2022	South Parking Lot								
	2" full mill and 2" asphalt overlay	Sq.Ft.	7,900	\$2.40	\$19,000.00	\$19,000.00			
	4" base asphalt improvements	Sq.Ft.	1,200	\$3.00	\$3,600.00	\$3,600.00			
	4" AB3 subbase improvements	Sq.Ft.	1,200	\$2.25	\$2,700.00	\$2,700.00			
	Restripe lot	TFAW			\$600.00	\$600.00			
	R/R 6" curb w/ gutter	Ln.Ft.	278	\$65.00	\$18,200.00		\$17,500.00	\$700.00	
2022	Main Drive								
	Parking lot crack filling	Lbs	300	*	\$600.00	\$600.00			
	6" asphalt patching	Sq.Ft.	2,420	\$7.00	\$17,000.00	\$17,000.00			
	6" asphalt patching	Sq.Ft.	830	\$8.00	\$6,700.00		\$6,700.00		
	R/R 6" curb w/ gutter	Ln.Ft.	343	\$65.00	\$22,400.00	\$5,800.00	\$3,000.00	\$13,600.00	
2022	North Access Drive								
	R/R 8" concrete drive	Sq.Ft.	720	\$17.50	\$12,600.00		\$12,600.00		
	R/R 8" concrete drive (could replace w/ asphalt)	Sq.Ft.	3,700	\$17.50	\$64,800.00			\$64,800.00	
	Modify grass swale to improve drainage	TFAW			\$3,000.00		\$3,000.00		
2022	Back Parking Lot								
	Parking lot crack filling	Lbs	120	*	\$400.00	\$400.00			
2022	R/R 4" sidewalk (39± locations)	Sq.Ft.	6,030	\$13.00	\$78,500.00	\$50,700.00	\$16,000.00	\$10,300.00	\$1,500.00
2022	R/R 8" concrete drive - outside property line	Sq.Ft.	520	\$17.50	\$9,100.00		\$9,100.00		

Campus Construction Cost Subtotals

Mobilization

PL&M Bonds

Contingency

Estimated Engineering Fee

Estimated Testing Fees

Campus Estimate of Total Probable Costs

\$292,300.00	\$100,800.00	\$74,700.00	\$115,300.00	\$1,500.00
\$2,500.00	\$1,000.00	\$500.00	\$1,000.00	\$0.00
\$4,700.00	\$1,600.00	\$1,200.00	\$1,800.00	\$100.00
\$32,000.00	\$11,000.00	\$8,000.00	\$12,000.00	\$1,000.00
\$23,200.00	\$8,000.00	\$5,900.00	\$9,100.00	\$200.00
\$6,200.00	\$2,100.00	\$1,600.00	\$2,400.00	\$100.00
\$354,700.00	\$122,400.00	\$90,300.00	\$139,200.00	\$2,800.00



# Survey Example: Asphalt and/or Concrete

Lawrence Public Schools - Parking Lot, Curb, and Sidewalk Survey  
February 25, 2022

By Norton & Schmidt  
N&S Job #2021-2932

Location	All Repairs	Priority 1	Priority 2	Priority 3	Priority 4
Deerfield Elementary	\$259,300	\$42,900	\$62,700	\$149,600	\$4,100
Prarie Park Elementary	\$292,300	\$100,800	\$74,700	\$115,300	\$1,500
Quail Run Elementary	\$385,900	\$203,600	\$79,100	\$98,900	\$4,300
Southwest Middle School	\$485,300	\$313,200	\$147,600	\$21,100	\$3,400
East Heights Elementary	\$177,200	\$34,500	\$43,300	\$99,400	\$0
Construction Cost Subtotals	\$1,600,000	\$695,000	\$407,400	\$484,300	\$13,300
Mobilization	\$16,000	\$7,500	\$4,000	\$4,500	\$0
PL&M Bonds	\$25,200	\$10,800	\$6,400	\$7,600	\$400
Contingency	\$176,000	\$74,000	\$45,000	\$53,000	\$4,000
Estimated Engineering Fee	\$127,300	\$55,100	\$32,400	\$38,500	\$1,300
Estimated Testing Fees	\$33,700	\$14,500	\$8,600	\$10,200	\$400
<b>Total Estimated Parking Lot, Curb, and Sidewalk Maintenance &amp; Repair Design and Construction Cost</b>	<b>\$1,978,200</b>	<b>\$856,900</b>	<b>\$503,800</b>	<b>\$598,100</b>	<b>\$19,400</b>

# Components of the Building Composite Report

## System

Building Superstructure category  
 exterior windows  
 exterior doors  
 roofing category  
 partitions  
 interior doors  
 specialties  
 stair construction / integrity  
 wall finishes  
 floor finishes  
 ceiling finishes  
 plumbing category  
 HVAC category  
 electrical category  
 fixed furnishings  
 mobile furnishings  
 asphalt category  
 concrete category  
 Elevators  
 skylights  
 loading dock equipment  
 Fields and Greenspace  
 Track and Field - Track  
 Track and Field - Jump and Throw  
 Tennis Court  
 Outdoor Buildings (Sheds and Gazebos)  
 Landscaping

SF	replacement cost	SF	replacement cost
60000	\$ 22,763,078.61	133000	\$ 50,458,157.58
K-5		K-5	
BUILDING NUMBER ONE		BUILDING NUMBER TWO	
CONDITION SCORE	TOTAL CONDITION COST (MILLIONS)	CONDITION SCORE	TOTAL CONDITION COST (MILLIONS)
34%	\$ 10.94	67%	\$ 6.94
PRIORITY SCORE	PRIORITY 1 COST COST (MILLIONS)	PRIORITY SCORE	PRIORITY 1 COST COST (MILLIONS)
28%	\$ 8.79	67%	\$ 5.33

Estimated Cost/SF (total cost including fees)		\$ 379.38	04, 2022	TOTAL "INSURANCE" VALUE		\$ 73,221,236.19
total SF / District		133,000		check sum		\$ 73,221,236.19
Target Condition Rating		4.44				

Condition Score Average by Segment			ALL COSTS			Costs (in millions) for segments to return to 80% condition score		
AVE MS	AVE MS	AVE PE+ES	PE+ES	MS	MS	PE+ES	MS	MS
#REF!	#REF!	#REF!	#REF!	#REF!	#REF!	#REF!	#REF!	#REF!
#REF!	#REF!	#REF!	#REF!	#REF!	#REF!	#REF!	#REF!	#REF!

DISTRICT WIDE Ave Score		% of cost of a building		DISTRICT WIDE System Costs		System Costs by Grade Segment (below)	
System	Score	Costs	% of cost	Costs	% of cost	Costs	% of cost
Building Superstructure category	1	5.50	20.65%	#REF!	#REF!	#REF!	#REF!
exterior windows	1	4.00	4.80%	#REF!	#REF!	#REF!	#REF!
exterior doors	1	4.50	0.30%	#REF!	#REF!	#REF!	#REF!
roofing category	1	5.00	3.23%	#REF!	#REF!	#REF!	#REF!
partitions	3	5.50	4.18%	#REF!	#REF!	#REF!	#REF!
interior doors	3	6.00	1.53%	#REF!	#REF!	#REF!	#REF!
specialties	3	6.50	0.72%	#REF!	#REF!	#REF!	#REF!
stair construction / integrity	2	7.00	0.22%	#REF!	#REF!	#REF!	#REF!
wall finishes	3	7.50	1.95%	#REF!	#REF!	#REF!	#REF!
floor finishes	3	3.50	3.34%	#REF!	#REF!	#REF!	#REF!
ceiling finishes	3	4.00	4.0%	#REF!	#REF!	#REF!	#REF!
plumbing category	1	4.00	4.1%	#REF!	#REF!	#REF!	#REF!
HVAC category	1	4.00	10.78%	#REF!	#REF!	#REF!	#REF!
electrical category	1	7.00	10.32%	#REF!	#REF!	#REF!	#REF!
fixed furnishings	3	7.50	0.75%	#REF!	#REF!	#REF!	#REF!
mobile furnishings	2	8.00	3.78%	#REF!	#REF!	#REF!	#REF!
asphalt category	1	8.50	4.85%	#REF!	#REF!	#REF!	#REF!
concrete category	1	9.00	0.05%	#REF!	#REF!	#REF!	#REF!
Elevators	1	5.00	2.38%	#REF!	#REF!	#REF!	#REF!
skylights	1	5.50	1.32%	#REF!	#REF!	#REF!	#REF!
loading dock equipment	3	6.00	2.58%	#REF!	#REF!	#REF!	#REF!
Fields and Greenspace	1	6.50	0.05%	#REF!	#REF!	#REF!	#REF!
Track and Field - Track	2	7.00	3.18%	#REF!	#REF!	#REF!	#REF!
Track and Field - Jump and Throw	2	7.50	0.22%	#REF!	#REF!	#REF!	#REF!
Tennis Court	2	8.00	0.3%	#REF!	#REF!	#REF!	#REF!
Outdoor Buildings (Sheds and Gazebos)	3	8.50	0.37%	#REF!	#REF!	#REF!	#REF!
Landscaping	3	9.00	0.62%	#REF!	#REF!	#REF!	#REF!

SF	replacement cost	SF	replacement cost
60000	\$ 22,763,078.61	133000	\$ 50,458,157.58
K-5		K-5	
BUILDING NUMBER ONE		BUILDING NUMBER TWO	
CONDITION SCORE	TOTAL CONDITION COST (MILLIONS)	CONDITION SCORE	TOTAL CONDITION COST (MILLIONS)
34%	\$ 10.94	67%	\$ 6.94
PRIORITY SCORE	PRIORITY 1 COST COST (MILLIONS)	PRIORITY SCORE	PRIORITY 1 COST COST (MILLIONS)
28%	\$ 8.79	67%	\$ 5.33

# Facility Q/A

---

## Opportunity to have questions answered by experts!

Note: Questions should be focused toward helping you understand how the architect assessed buildings and created the Building Composite Report.

Questions should not be building specific.



# Video 1: Changing School Utilization

---



**VIDEO INTRO** – I was looking for a way to show you all the different facets that are part of a school closing and I am going to show you a video that encapsulates most of the situation. The video you are going to watch focuses on the closing of one elementary school.

As you will see this is a beloved school. It is successful, the principal is energetic and engaging. The staff and teachers love it. You will hear students speak about how the school impacts their lives. Parents are supportive and demonstrate how much they love this school. But the school board voted to close it. This of course has some heart wrenching scenes of the school community dealing with the closure of their school.

However, this video also shows you the way in which the school board chose to make this difficult decision by using a short timeline, and a process that wasn't inclusive nor transparent. This Board acted in a way that did not bring about support from the school community.

This is an unacceptable situation, one that we can avoid in Lawrence with the work that this committee will do.

## The School on the Corner Video

<http://www.citizen-times.com/videos/news/local/2016/06/25/86377618/>

# Activity 2 : Do's and Do Not's

---



## Goal of Activity:

To take a deeper dive into what you learned from the video



## Discussion:

At your table discuss the video and break out your thoughts in the following two categories:

1. When closing a school, what should be done (Do's)?
2. When closing a school, what should not be done (Do Not's)?



## Report Out:

Tables report out to the group



# Do Responses 11/02/22

Data needs to be provided in a neutral way, not to prove a point provided in advance so people can examine real solutions

Treat parents as partners to help flush out pros and cons of options – some will be purely emotion and sane with really good points

Make a thoughtful, data-based non-rushed decisions

Involve the community; be transparent

Communication and a proper timeline

Involve stakeholder in development of options

Keep the community in the know

Data should be bi partisan/lack bias

Understand the community connections vs the need of the district

A full inventory of all options

Be transparent and have community involvement

Think about closures in light projected population trends

Include projected student loss from school closures (to home/private/other districts) in calculations

Be transparent

Communication the financial necessities

Have a reasonable timeline – be considerate to stakeholders

Give ample time to the community to have input

Be conscientious about the options and alternative for school closures

Get more direction the Board – make a decision to help up – what do they want?

Get families involved in the decisions

Use best practices and adapt official procedures

Move faster; we don't have time

Be transparent about the process and the data

Listen to all parties. Try and take emotion/personal feelings out of it. Be transparent

Have transparency among families and community and make sure there is awareness of school losing long before the school closes

Consider who we ask to relocation and to where

Look at what no closing schools has done. Nothing has been saved except bricks

Harm thousand of student and dozens of staff because we or the board avoids making hard decisions

Be intentional with decision making

Look at data without school name; use numbers to come to a decision without emotion

Make sure these is rock-solid, vetted, rationale for the decision

Be objective

Offer more opportunities for public participation other than just public hearing or thought exchange

Information be given out early, meetings be open and recorded, and financial and other reasons presented clearly in easy to digest ways for the public

Follow best practice and leave transition time

Look at capacity and cost of all buildings including admin and previously closed schools

Explore other options; plan closures 1-2 years in advance

# Do Not Responses 11/02/22

Leaving the public in the dark
Make assumptions
Have a plan ahead of time and manipulate your community process to achieve that plan
Just listen to most publicized people
Try to cover up information
Rush
Have a plan that is rushed and does not give the district or community time to accept change
Surprise people – bring open conversation early
Not consider all stakeholders in decisions
Let the Board have the final say
Assume the school district knows what the public wants
Leave out hard looks at deep cuts to central admin and staff
Be inconsiderate toward families about the change that will happen – they value their school
Waste time
Wait to give info to stakeholders
Avoid making hard decisions because they will upset stakeholders
Ignore the public
Have an agenda
Rush to cut programs like gymnastics
Make decisions based on emotion
Assume why enrollment has declined, survey and get data on why they left and what might bring them back
Hide numbers to artificially inflate savings (like the 158 positions last year)
Pass the torch, yet again, because the decision is hard
Keep decision making in the dark
Continue communication with the public
Leave out additional costs that effect savings such as bussing
Announce school closure at Feb Board Meeting
Take away a school and not tell staff and families
Do not close a school without calculation and presenting a plan with increased costs due to transportation
Make decision on emotions
Lose public trust through lack of transparency or public investment
Add Montessori classrooms at \$100,000 without data if this is bringing in new kids or just spending from other schools

# Survey Information

---

## SURVEY DETAILS:

- ☐ Launches on November 8, 2022
- ☐ Closes on November 18, 2022
- ☐ Five Parts:

### SLIDE 1: Welcome

- ☐ What is the survey about

### SLIDE 2: Background information

- ☐ Committee Objectives, Equity Policy, and Process

### SLIDE 3: Digging Deeper

- ☐ Prioritization of Financial Buckets

### SLIDE 4: Committee Belief Statements

- ☐ Finance, Teaching and Learning, Facilities, and Public Vision

### SLIDE 5: Wrap Up

- ☐ Demographic Questions

## SURVEY GOALS:

1. Provide meaningful community input concerning committee process and belief statements
2. Concise and focused to provide clarity on issues that input is being asked about
3. An avenue for transparent community public input

## Progress Update

- ☒ Financial Update
- ☒ Strategic Plan/Teaching and Learning
- ☒ Facility Condition Assessment
- ☒ Belief Statements/SMART Goals
- ☐ Future Enrollment Projections
  - Future Homework for Meeting #5
- ☐ Solution Conversation(s)

Orange: Complete in previous meeting(s)

Blue: Complete tonight

# Next Steps

Between now and the next time we meet, we will be sending out solution-oriented materials. Please be prepared to discuss optional solutions at Meeting #5.

Thank you for attending Lawrence Facility Master Plan Committee Meeting #4!

The next meeting is **Meeting #5 on Nov. 30<sup>th</sup>**



**Meeting #5**  
November 30, 2022



**Homework**  
Members unable to join will be able to understand what was discussed and participate in the discussion for next time.



**Communication**  
Connect the community to inform them of the process, invite them to public input sessions, and prepare for the possible changes.

LPS Staff Assistance: Provide curriculum, building utilization, architectural facility review

Consultant Assistance: RSP provides Enrollment Analysis; Architect company provides Building Assessments

